



The Changing Landscape of Catholic Health Care

SR. CAROL KEEHAN, DC
President and Chief Executive Officer
Catholic Health Association
Washington, D.C.

© The Catholic Health Association of the United States

The Changing Landscape of Catholic Health Care

A look at the landscape:

- Political
- Health
- Church
 - United States
 - Rome



© The Catholic Health Association of the United States

The Changing Landscape of Catholic Health Care

It is not easy to be a sponsor today

But it is incredibly important

The Changing Landscape of Catholic Health Care

Political Environment

Very contentious and uncivil

Efforts to repeal or undermine the ACA

- Congress
- HHS regulations
- State decisions
 - Texas case
 - Work requirements



Efforts to make Medicaid Block Grants by regulatory changes

The Changing Landscape of Catholic Health Care

Political Environment

- U.S. House of Representatives under Democratic control
- Clear message that there is much in the ACA that the privately insured feel strongly about
 - Example: pre-existing conditions
- 340B Program

The Changing Landscape of Catholic Health Care

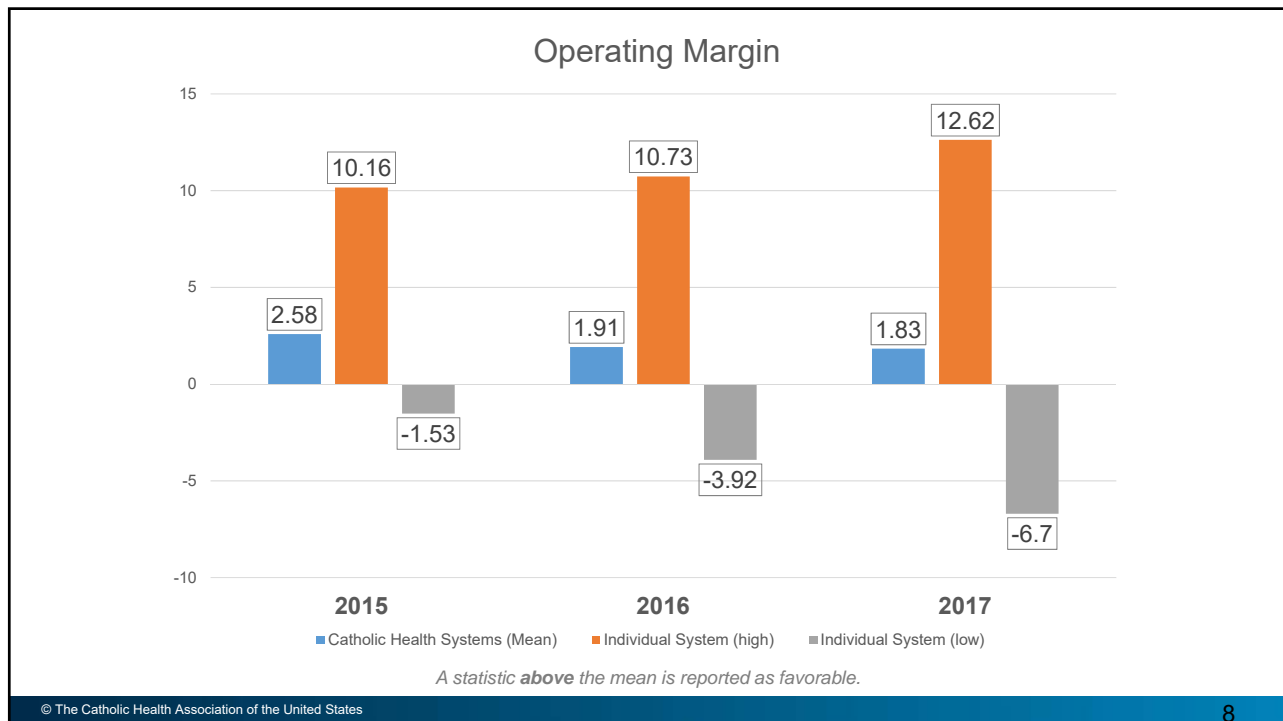
Health

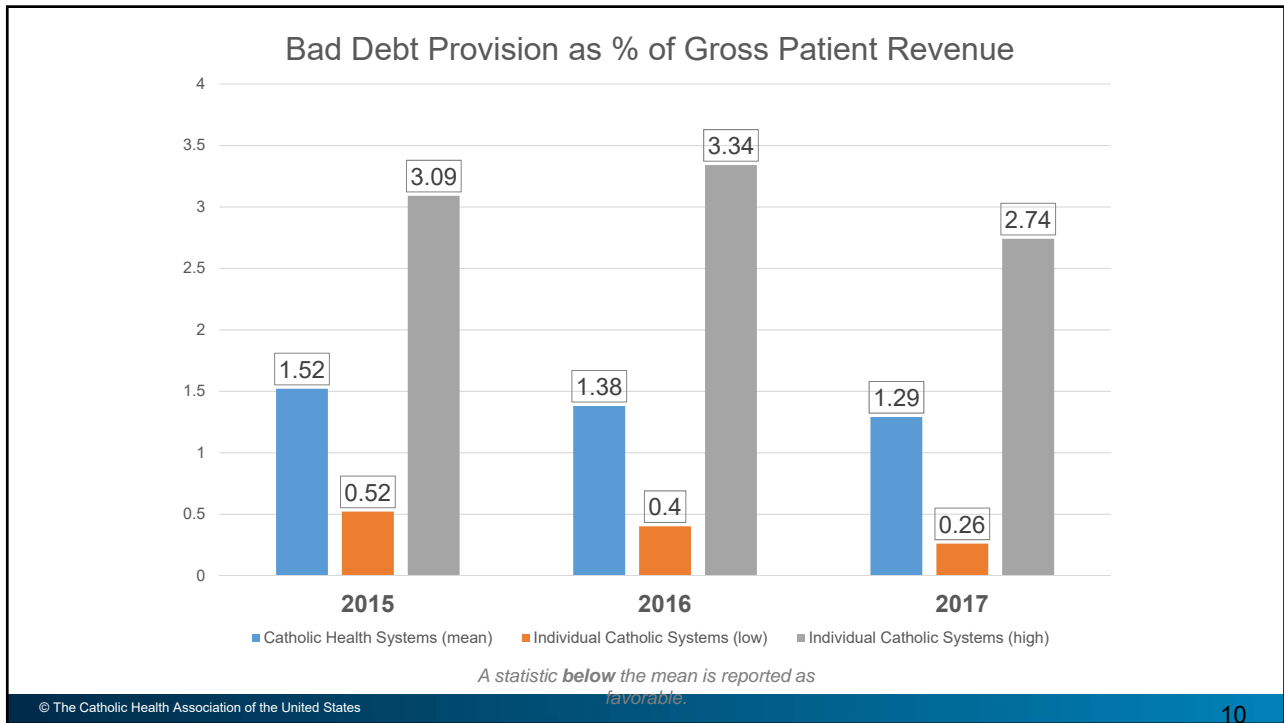
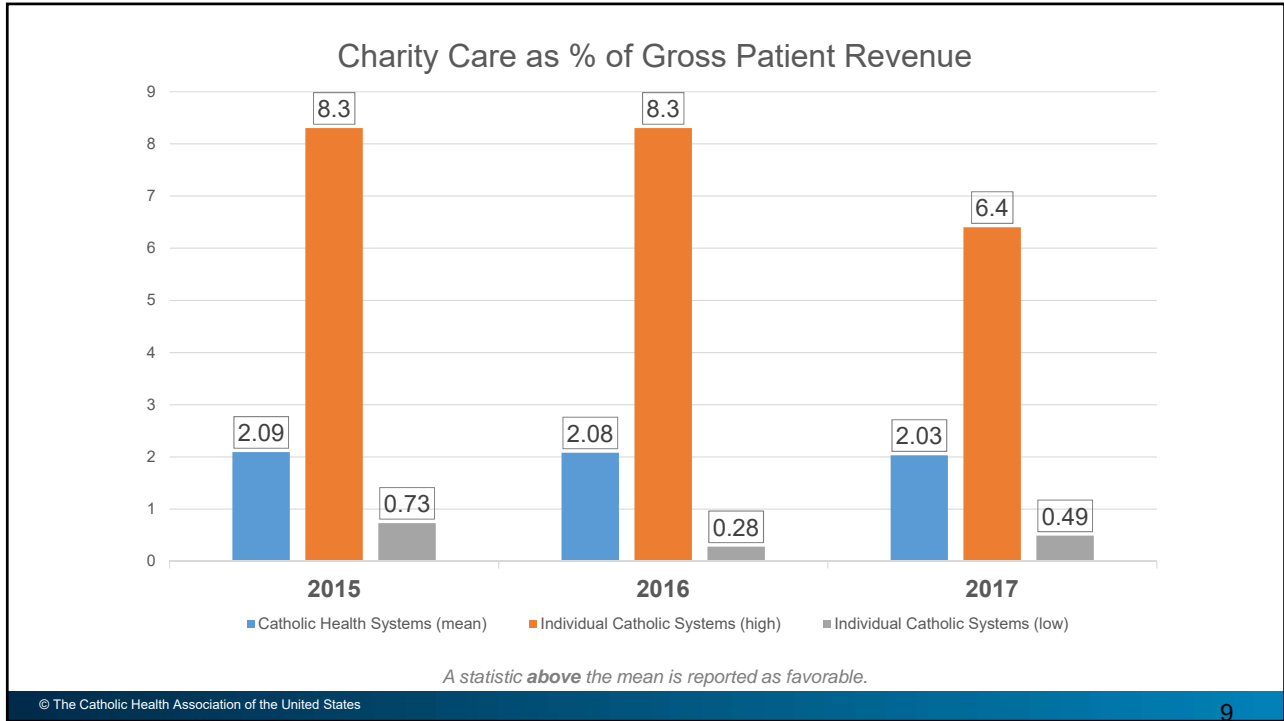
- Lots of disruption in health care delivery/financing
 - Mergers – CVS/Aetna, United/DaVita, Amazon/Berkshire Hathaway/JPMorgan
- Insurance markets – in flux

The Changing Landscape of Catholic Health Care

Catholic Health

- More mergers, bankruptcies, sales
- Church challenges
- Financial changes





The Changing Landscape of Catholic Health Care

Catholic Health

System Development/PJP Development

- What has it meant for the future of Catholic health care?
- Is it doing what we expected/hoped for?

The Changing Landscape of Catholic Health Care



What have we learned from our experiences?

Do we believe that the best days of Catholic health care are ahead of us or behind us?

The Changing Landscape of Catholic Health Care

Are we clear on what “best days” mean?

The Changing Landscape of Catholic Health Care

Do “best days” mean:

Lay people have matured in their roles in church ministries and manage with equal or better commitment and conviction than the sisters who preceded them did – resulting in demonstrably better outcomes in quality, finance, employee treatment and mission focus?

The Changing Landscape of Catholic Health Care

Vesting responsibility for
governance/management with boards/executives
does not mean abdicating responsibility

The Changing Landscape of Catholic Health Care

PJPs must be strong and clear on
expectations

The Changing Landscape of Catholic Health Care

Church

The future of Catholic health care is not all that is at risk – we are at a critical moment in the church.

Cannot exaggerate the need for credibility and authenticity

Do our actions/priorities demonstrate our commitment to Gospel values?

The Changing Landscape of Catholic Health Care

Church

So many incredible programs in Catholic health care and daily encounters get overshadowed by behaviors of church and ministry leaders.



The Changing Landscape of Catholic Health Care



CHI builds community's defense against sex trafficking

Ride On: PeaceHealth's bike share

Bon Secours Richmond promotes affordable neighborhoods, 'one house at a time'



Catholic Health World
CATHOLIC HEALTH ASSOCIATION OF THE UNITED STATES



High school students gain health literacy through SSM Health effort

Trinity Health goes to school to promote wellness, transform communities

The Changing Landscape of Catholic Health Care

Do we help counteract the current public image of the church or confirm it?

Can we help the church embrace transparency and integrity by modeling it?

The Changing Landscape of Catholic Health Care

I am convinced that Catholic health care can do much to help the church transform itself and its public image and credibility.



The Changing Landscape of Catholic Health Care

It is a challenging time on many fronts but also a graced moment in many ways.



The Changing Landscape of Catholic Health Care

We are at our best when we mobilize and
commit together.

